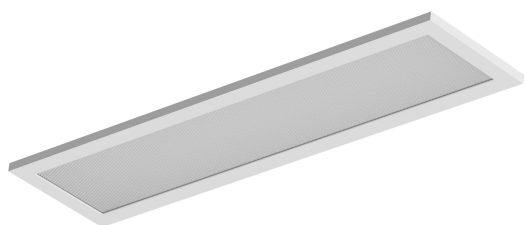


PRODUCT DATASHEET

PL INT 1200 V 42W 840 IP65 UGR19

PANEL INTEGRATED IP65 UGR19 | Waterproof recessed panel luminaires with low glare, for 600 x 600 mm and 1200x300 ceiling systems



Areas of application

- Direct replacement for luminaires with fluorescent lamps
- Suitable for recessed ceiling systems with grid size of 600 x 600 mm and 1200x300 mm

Product benefits

- Suitable for use in dusty and damp locations thanks to high IP rating
- High lumen output reduces the total number of panels per installation
- Good glare reduction (UGR < 19)
- Low flicker light thanks to special electronic control gear
- Energy savings thanks to system efficacy of 120 lm/W
- 5 years guarantee

Product features

- Integrated driver
- Suspended installation possible
- Lifetime (L70/B50): up to 72,000 h (at 25 °C)
- Lifetime (L80/B10): up to 50,000 h (at 25 °C)

TECHNICAL DATA

Electrical data

Nominal wattage	42.00 W
Nominal voltage	220...240 V
Mains frequency	50 Hz
Nominal current	180.000 mA
Inrush current	0.19 A
Max. number of luminaires per miniature circuit breaker B16	16
Max. number of luminaires per miniature circuit breaker C10	13
Max. number of luminaires per miniature circuit breaker C16	21
Protection class	II

Photometrical data

Luminous flux	4410 lm
Luminous efficacy	105 lm/W
Color temperature	4000 K
Color rendering index Ra	> 80
Beam angle	90 °

Dimensions & Weight

Length	1195.00 mm
Width	295.00 mm
Height	20.00 mm
Product weight	3110.00 g



Materials & Colors

Product color	White
Housing color	White
Body material	Aluminum

Application & Mounting

Type of protection	IP65
Dimmable	No

Application environment	Indoor
LED module replaceable	-

Control gear

Output current	150 mA
----------------	--------

LOGISTICAL DATA

Product code	Packaging unit (Pieces/Unit)	Dimensions (length x width x height)	Gross weight	Volume
4099854188398	Folding box 1			
4099854279782	Shipping box 2	1,230 mm x 138 mm x 338 mm	8280.00 g	57.37 dm³

The mentioned product code describes the smallest quantity unit which can be ordered. One shipping unit can contain one or more single products. When placing an order, for the quantity please enter single or multiples of a shipping unit.

DISCLAIMER

Subject to change without notice. Errors and omission excepted. Always make sure to use the most recent release.