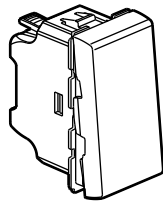
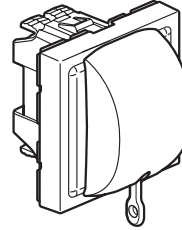


Mosaic™ 6 A pushbuttons

Cat. No.(s): 0 770 30/31/32/40/41/42/44
 0 791 30/40/42 - 0 792 30/32/40/42



0 770 30/31- 0 791 30 - 0 792 30



0 770 44

1. USE

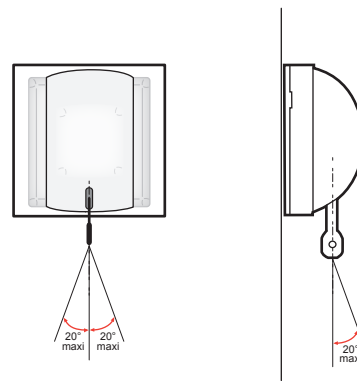
General lighting control mechanisms with or without signalling elements (indicator light, label holder).
 The mechanisms can be flush-mounted or surface-mounted.
 To be equipped with plate.

2. RANGE

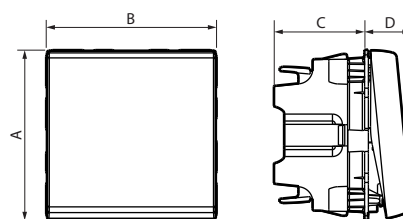
	Description	White	Anthracite	Aluminium
	Switch - 1 module	0 770 30	0 791 30	0 792 30
	Changeover pushbutton - 1 module	0 770 31	-	-
	Changeover pushbutton with LED indicator light To be equipped with an indicator 1 module	0 770 32	-	0 792 32
	Switch - 2 modules	0 770 40	0 791 40	0 792 40
	Changeover pushbutton - 2 modules	0 770 41	-	-
	Changeover pushbutton with LED indicator light To be equipped with an indicator 2 modules	0 770 42	0 791 42	0 792 42
	Changeover pushbutton with pull-cord 2 modules	0 770 44	-	-

3. INSTALLATION

■ Precaution for use for Cat. No. 0 770 44



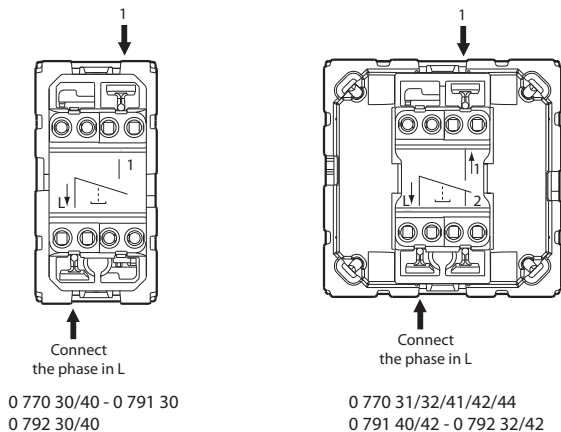
4. OVERALL DIMENSIONS (mm)



References	A	B	C	D
0 770 30/31/32 0 791 30 - 0 792 30/32	45	22.5	24	12.3
0 770 40/41/42 0 791 40/42 - 0 792 40/42	45	45	24	12.3
0 770 44	45	45	22.6	13

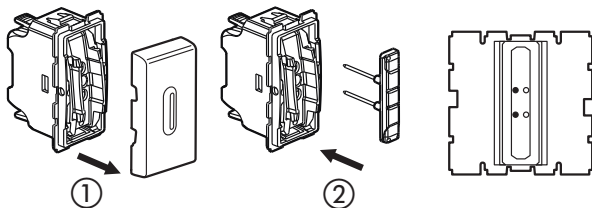
5. CONNECTION

Automatic terminals
Terminal capacity: 2 x 2.5 mm²
Stripping length: 12 mm
13 mm for Cat. No. 0 770 44

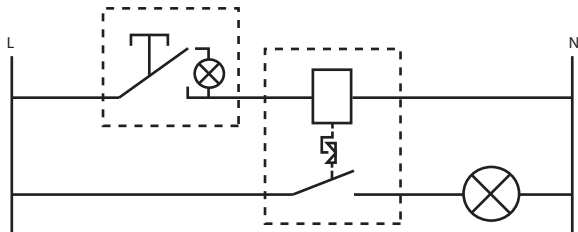


6. WIRING

Catalogue numbers: 0 770 32/42 - 0 792 32/42 - 0 791 42
Indicator function: Only possible with support frame Cat. No. 0 802 62.
Illuminated function: Illuminates the pushbutton in the dark.



1 - Unclip the rocker
2 - Insert indicator light Cat. No. 0 676 86 or Cat. No. 0 676 87



7. TECHNICAL CHARACTERISTICS

7.1 Mechanical characteristics

Impact tests: IK 04
Protection against solid bodies and liquids: IP 31 D

Nota :

Switching mechanism (handling force 2.6 to 3.5 N)
Pull-cord mechanism (handling force 3 to 5 N) for Cat. No. 0 770 44

7.2 Material characteristics

- Rocker: ABS
- Base: PC
- Rocker support: PC
- Halogen free
- UV resistant
Self-extinguishing:
+ 850°C / 30 s for insulating components holding in place live parts.
+ 650°C / 30 s for the other insulating components.

7.3 Electrical characteristics

Voltage: 250 V~
Current: 6 A

7.4 Climatic characteristics

Storage temperature: - 10° C to + 70° C
Operating temperature: - 5° C to + 35° C

8. CLEANING

Surface cleaning with a cloth.
Do not use: acetone, tar remover, trichloroethylene.

8.1 Resistance to cleaning agents

Resistance to the following agents: Hexane (EN 60669-1), Methylated spirits, Soapy water, Diluted ammonia, Diluted pure bleach 10%, Glass cleaning substance, Pre-impregnated wipes.

8.2 Resistance to hospital-type cleaning agents.

Resistance to the following agents: Anios, Surfanos, Bactillysine, Diluted hydrogen peroxide (35%).

Caution: A preliminary test should be carried out if other specific cleaning products are to be used.

9. ACCESSORIES

Lights for pushbuttons with indicator light:

Pushbuttons	Illuminated
0 770 32	
0 770 42	0 676 86 (230 V / 0.15 mA)
0 791 42	0 676 87 (12/24/48 V)
0 792 32	
0 792 42	

Cord for pushbutton with pull-cord

0 770 44	0 898 05 Cordon 1.5 m
----------	-----------------------

10. CONFORMITY AND APPROVALS

Compliance with standards of installation and manufacturing.
See e.catalogue.