



SETRON, Switch disconnecter 3LD, main switch, 3-pole, Iu: 16 A, Operating power / at AC-23 A at 400 V: 7.5 kW, molded-plastic encapsulation for metric cable gland, rotary operating mechanism, black

Model	
product brand name	SETRON
product designation	3LD Switch disconnecter
design of the product	Main switch
display version / for switch position indicator manual operation	1 ON - 0 OFF
design of the operating mechanism	Short rotary knob
design of handle	rotary operating mechanism, black
type of the driving mechanism / motor drive	No
General technical data	
number of poles	3
number of poles / note	N + PE
type of device	fixed mounting
type of switch	Molded-plastic enclosure for metric threaded joint
size of switch disconnecter	1
electrical endurance (switching cycles)	
• at AC-23 A / at 690 V	6 000
I _{2t} value / with closed switch / at 690 V / for combination switch + gG fuse / maximum	2.5 kA ² .s

let-through I _{2t} value / with closed switch / at 440 V / for combination switch + gG fuse / maximum	2.5 kA ² .s
mechanical service life (switching cycles) / typical	100 000
operating frequency / maximum	50 1/h

Voltage

insulation voltage / rated value	690 V
surge voltage resistance / rated value	6 kV
operating current / at AC / rated value	16 A
operating voltage <ul style="list-style-type: none"> at AC / at 50/60 Hz / rated value 	690 V

Protection class

protection class IP	IP65
degree of protection NEMA rating	1, 4X, 12
protection class IP / on the front	IP65

Dissipation

power loss [W] <ul style="list-style-type: none"> for rated value of the current / at AC / in hot operating state / per pole per conductor / typical 	0.5 W 0.5 W
--	----------------

Current

operating current <ul style="list-style-type: none"> at AC-23 A / at 690 V / rated value at AC-23 A / at 400 V / rated value at AC-22 A / at 690 V / rated value at AC-21 / at 690 V / rated value at AC-21 A / at 240 V / rated value at AC-21 A / at 440 V / rated value at AC-22 A / at 240 V / rated value at AC-22 A / at 440 V / rated value at AC-23 A / at 240 V / rated value at AC-23 A / at 440 V / rated value 	9 A 16 A 16 A 16 A 16 A 16 A 16 A 16 A 16 A 16 A
operating current / of upstream fuse / rated value	20 A
let-through current / with closed switch <ul style="list-style-type: none"> at 440 V / for combination switch + gG fuse / maximum at 690 V / for combination switch + gG fuse / maximum permissible 	3 kA 3 kA
short-time withstand current (I _{cw}) <ul style="list-style-type: none"> limited to 1 s / rated value at 690 V / limited to 1 s / rated value 	340 A 340 A

Main circuit

operating frequency	
• initial value	50 Hz
• full-scale value	60 Hz
operating power	
• at AC-23 A / at 240 V / rated value	4 kW
• at AC-23 A / at 400 V / at 50/60 Hz / rated value	7.5 kW
• at AC-23 A / at 400 V / rated value	7.5 kW
• at AC-23 A / at 440 V / rated value	7.5 kW
• at AC-23 A / at 690 V / rated value	7.5 kW
• at AC-3 / at 240 V / rated value	3 kW
• at AC-3 / at 400 V / rated value	5.5 kW
• at AC-3 / at 690 V / rated value	5.5 kW
operating current / rated value	16 A

Auxiliary circuit	
number of CO contacts / for auxiliary contacts	0
number of NC contacts / for auxiliary contacts	0
number of NO contacts / for auxiliary contacts	0
operating voltage / of auxiliary contacts / at AC / maximum	500 V
continuous current / of the auxiliary contact / rated value	10 A
insulation voltage / of the auxiliary switch / rated value	500 V

Suitability	
suitability for use	
• main switch	Yes
• switch disconnecter	Yes
• EMERGENCY OFF switch	No
• safety switch	Yes
• maintenance/repair switch	Yes

Appearance	
color / of the actuating element	black

Product details	
• product function / can be locked into OFF position	Yes
number of bracket locks / maximum	3
hasp thickness / of the bracket locks / minimum	4 mm
hasp thickness / of the bracket locks / maximum	8 mm
product extension / optional	
• motor drive	No
• voltage trigger	No

Short circuit

conditional short-circuit current / with line-side fuse protection

- at 690 V / by gG fuse / rated value

50 kA

Number

number of connectable NC contacts / for auxiliary contacts / attachable / maximum

3

number of connectable NO contacts / for auxiliary contacts / attachable / maximum

5

number of connectable CO contacts / for auxiliary contacts / attachable / maximum

0

Connections

AWG number / as coded connectable conductor cross section / solid

- maximum
- minimum

10

18

type of connectable conductor cross-sections / for copper conductor

- solid
- finely stranded / with core end processing
- stranded

1x (1...6mm²)

1x (1...4mm²)

1x (1..6mm²)

type of connectable conductor cross-sections / for auxiliary contacts

- solid
- finely stranded / with core end processing
- stranded

lateral auxiliary switch 2x (0,75 ... 2,5mm²), 1x 4mm²; front auxiliary switch 1x (0,75 ... 2,5mm²)

lateral auxiliary switch 2x (0,75 ... 1,5mm²), 1x 2,5mm²; front auxiliary switch 1x 2,5mm²

lateral auxiliary switch 2x (0,75 ... 2,5mm²), 1x 4mm²; front auxiliary switch 1x (0,75 ... 2,5mm²)

type of electrical connection

- for main current circuit
- for auxiliary contacts

box terminal

connection terminals

Requirements

design of the fuse link

- for short-circuit protection of the main circuit / required
- for short-circuit protection of the auxiliary switch / required

fuse gL/gG: 20 A

fuse gL/gG: 10 A

Mechanical Design

height

152 mm

width

100 mm

depth

117 mm

mounting type

Complete unit in enclosure

mounting type	
• front mounting with 4-hole attachment	No
• front mounting with central attachment	Yes
• rail mounting	No
net weight	464 g

Environmental conditions

ambient temperature / during operation	
• minimum	-25 °C
• maximum	55 °C
ambient temperature / during storage / minimum	-25 °C

Certificates

reference code	
• acc. to DIN EN 61346-2	S
• acc. to DIN EN 81346-2	SF

General Product Approval

Declaration of Conformity



[Miscellaneous](#)



Test Certificates	Shipping Approval	other
Special Test Certificate Miscellaneous	 LRS	Environmental Conformations

Further information

Information- and Downloadcenter (Catalogs, Brochures,...)

<http://www.siemens.com/lowvoltage/catalogs>

Industry Mall (Online ordering system)

<https://mall.industry.siemens.com/mall/en/en/Catalog/product?mlfb=3LD2064-0TB51>

Service&Support (Manuals, Certificates, Characteristics, FAQs,...)

<https://support.industry.siemens.com/cs/ww/en/ps/3LD2064-0TB51>

Image database (product images, 2D dimension drawings, 3D models, device circuit diagrams, ...)

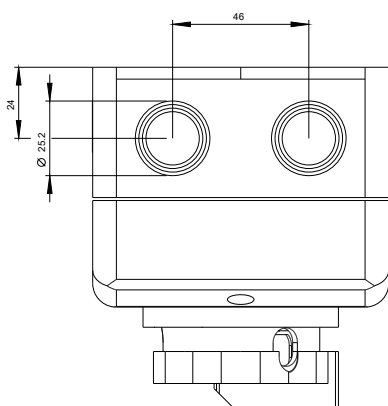
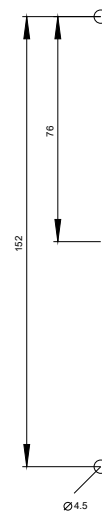
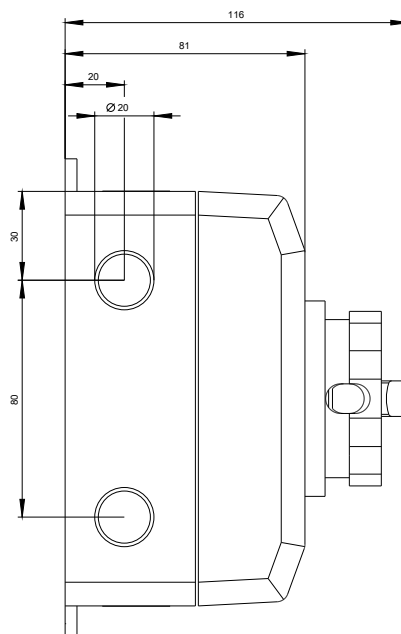
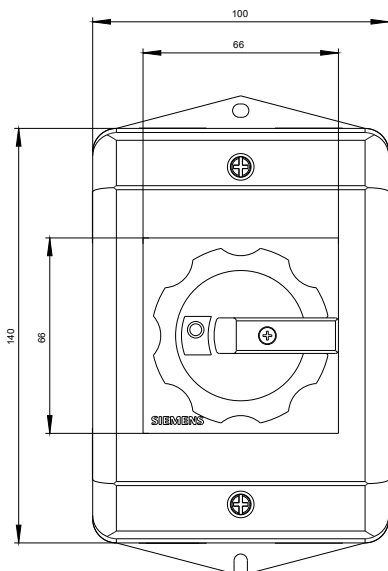
http://www.automation.siemens.com/bilddb/cax_en.aspx?mlfb=3LD2064-0TB51

CAX-Online-Generator

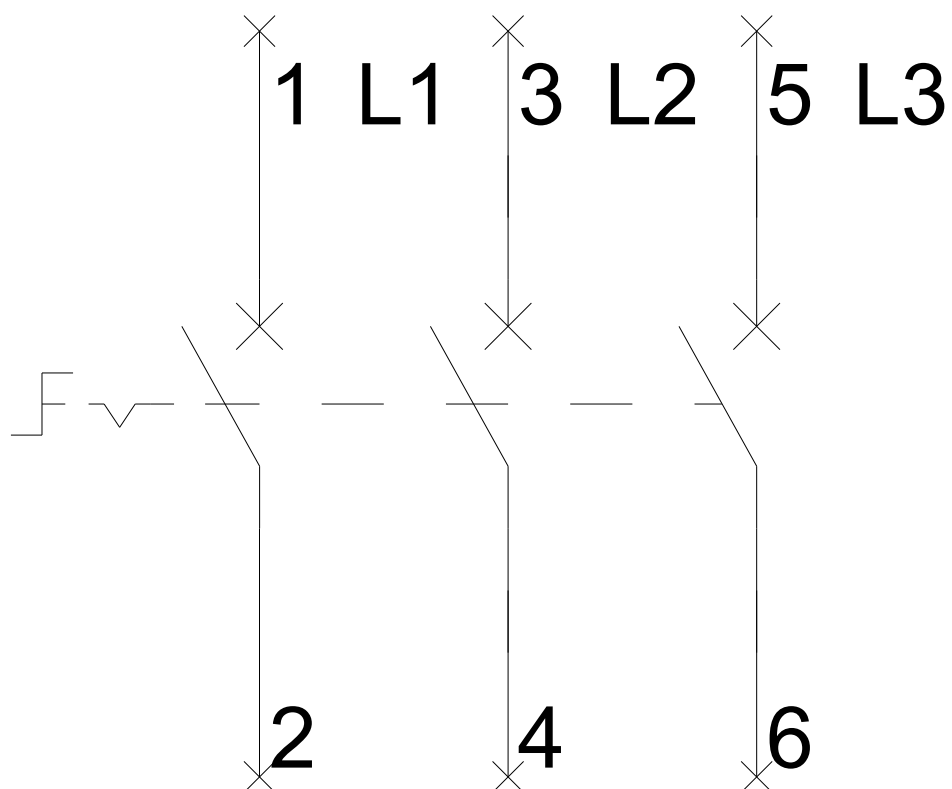
<http://www.siemens.com/cax>

Tender specifications

<http://www.siemens.com/specifications>



-Q1



-CI

